

SPECIFICATION NUMBER:	81-IN6205
MODEL:	22870

STANDARD INSTALLATION PROCEDURE

Your 22870 housing comes completely assembled. An 11 1/8" template is included for ease in cutting the mounting hole.

GENERAL INSTRUCTIONS:

- Carefully remove all equipment from the box.
- Place the 11 1/8" template at the desired location on the ceiling. Trace around the template, then cut a hole in the ceiling following the trace lines.
- Remove the desired conduit knock-out from the top of the 22870 housing.
- Remove the trim ring/dome assembly by pulling on the outside of the trim ring. The ring and dome are connected by three flat springs, which press against the side of the housing and lock into (3) cutouts.
- Run electrical cable into the housing through the conduit knock-out.
- With the support arms (3) rotated to the inside, slide the housing into the pre-cut hole (Figure 1).

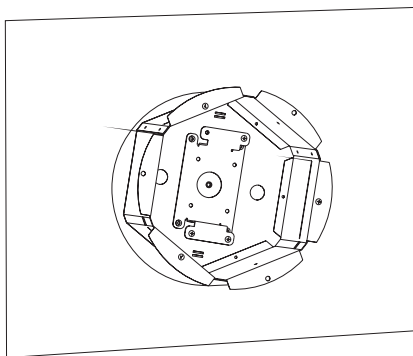


Figure 1

- With the bottom flange pressed up against the ceiling, rotate the support arms to the outside, the arms will fall to the back side of the ceiling. Tighten the (3) support arm screws (Figure 2).

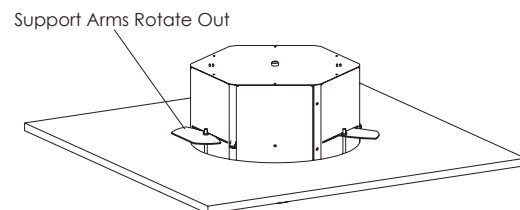


Figure 2

- If the housing is going into a ceiling where the support arms will not work, secure the housing by running bolts into the solid ceiling through the mounting holes in the bottom flange (Figure 1).
- For added support, run support wires from a secure structure to the two slots provided on the top of the housing (Figure 3).

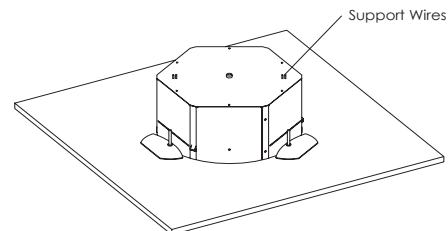


Figure 3

- The Axis 210, 210A, 211, 211A, 221, or 223M can be mounted on either side of the tilt part of the camera bracket (Figure 4).

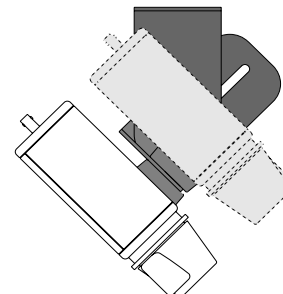


Figure 4

11. Complete all electrical connections, and adjust the camera to the proper angle.

12. Place the liner in the dome, aligned so that the cutout is facing in the same direction as the camera lens. Re-attach trim ring/dome assembly by pressing in and sliding the three flat springs into the housing (Figure 5). Make sure the springs are aligned with the three spring slots. You will feel all three springs snap into place when the dome is correctly secured into place. Rotate the dome for final proper positioning of the liner and camera.

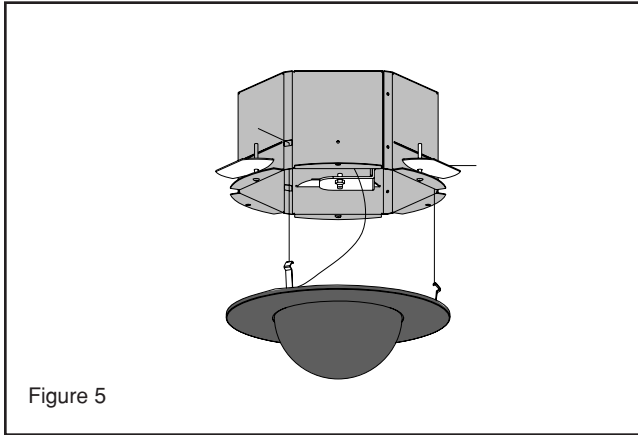
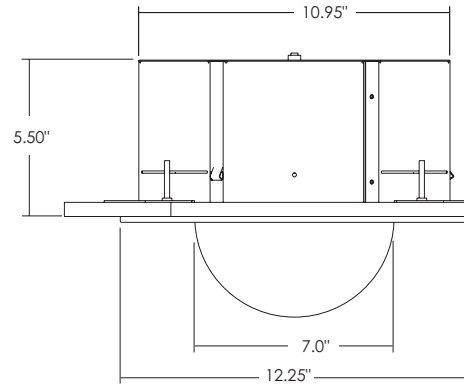
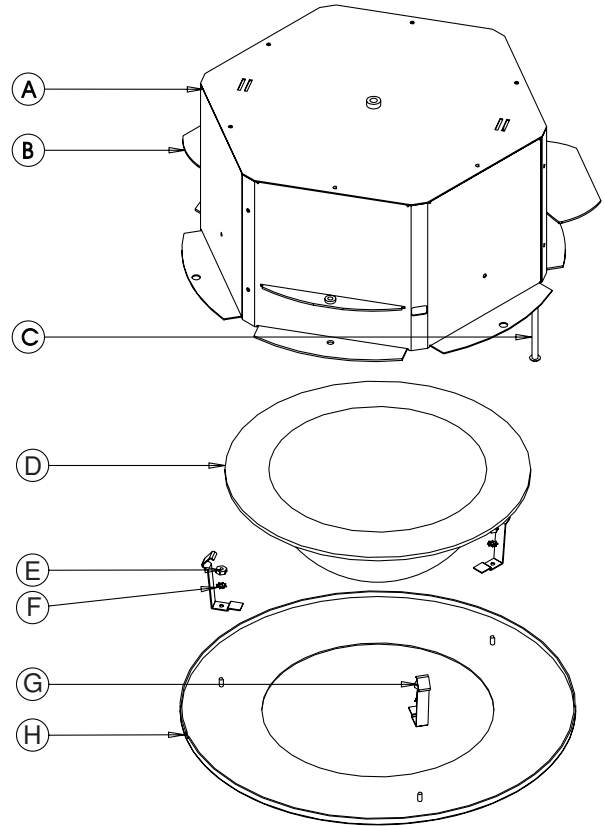


Figure 5



	Description	Part number	Qty.
A	22870 Top housing	30-VL1240	1
B	22870 Support arms	30-VL1208	3
C	10-24 x 2.0" SS pan head screw	90-BTSR23	3
D	8" Tinted capsule	20-DTMR8	1
E	6-32 Hex nut SS	91-NTHH04	3
F	#6 Star washer	92-WSTH01	3

IMPORTANT SAFEGUARDS

1. **Read Instructions** - All the safety and operating instructions should be read before the unit is operated.
2. **Retain Instructions** - The safety and operating instructions should be retained for future reference.
3. **Heed Warnings** - All warnings on the unit and in the operating instructions should be adhered to.
4. **Follow Instructions** - All operating and user instructions should be followed.
5. **Electrical Connections** - Only a qualified electrician should make electrical connections.
6. **Attachments** - Do not use attachments not recommended by the product manufacturer as they may cause hazards.
7. **Cable Runs** - All cable runs must be within permissible distance.
8. **Mounting** - This unit must be properly and securely mounted to a supporting structure capable of sustaining the weight of the unit. Accordingly:
 - a. The installation should be made by a qualified installer.
 - b. The installation should be in compliance with local codes.
 - c. Care should be exercised to select suitable hardware to install the unit, taking into account both the composition of the mounting surface and the weight of the unit. Be sure to periodically examine the unit and the supporting structure to make sure that the integrity of the installation is intact. Failure to comply with the foregoing could result in the unit separating from the support structure and falling, with resultant damages or injury to anyone or anything struck by the falling unit.

DOME/HOUSING/ELECTRICAL COMPONENT WARRANTY INFORMATION

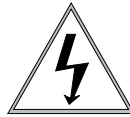
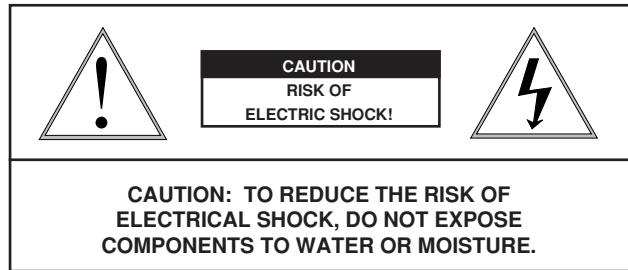
Videolarm, Incorporated warrants that its domes and housing sold hereunder shall be fit for the ordinary purpose for which said products are intended and shall be free from defects in material and workmanship for a period of five years from date of sale to buyer. Note that all electrical components will be warranted for a period of two years from date of sale to buyer. Videolarm makes no other warranty of any kind with respect to this product, whether expressed or implied, including, without limitation, the implied warranty of fitness for a particular purpose.

In the event of a breach of the above warranty, Videolarm shall, at its option, repair or replace said product. This is Videolarm's sole obligation under this warranty. In no event shall Videolarm be liable for any incidental or consequential damages, as defined in section 2-715 of the Uniform Commercial Code by a breach of this warranty.

Videolarm shall repair or replace defective products upon shipment of products prepaid to Videolarm, Inc., 2525 Park Central Blvd., Decatur, GA 30035.

Repairs made necessary by reason of accident, misuse or normal wear shall be charged at Videolarm's standard rate. This warranty gives you specific legal rights, and you may also have other rights which vary from state to state.

SAFETY PRECAUTIONS



The lightning flash with an arrowhead symbol, within an equilateral triangle, is intended to alert the user to the presence of non-insulated "dangerous voltage" within the product's enclosure that may be of sufficient magnitude to constitute a risk of electric shock to persons.



The exclamation point within an equilateral triangle is intended to alert the user to presence of important operating and maintenance (servicing) instructions in the literature accompanying the appliance.

UNPACKING

Unpack carefully. Electronic components can be damaged if improperly handled or dropped. If an item appears to have been damaged in shipment, replace it properly in its carton and notify the shipper.

Be sure to save:

1. The shipping carton and packaging material. They are the safest material in which to make future shipments of the equipment.
2. These Installation and Operating Instructions.

SERVICE

If the unit ever needs repair service, the customer should contact Videolarm (1-800-554-1124) for authorization to return and shipping instructions.

TECHNICAL SUPPORT

If technical support is needed, Videolarm has set-up a 24 hour technical support line for their customers.

24 HOUR TECHNICAL SUPPORT

1-800-554-1124